

**ENGLISH LANGUAGE**

**Sample Assessment Paper for Admission to Grade IX**

---

**Part A: Reading**

**Read the passage and answer the questions that follow.**

The worst days of any summer are the rainy ones. We spend all year looking forward to nice weather and long, hot days. All of winter, with its dreary gray days and **bitter** cold, we dream of those endless days at the beach, laying on the sand and soaking in the bright and burning sun. And then, summer comes, and it rains.

As a child, I would wake up to rainy summer days and come close to crying. It wasn't fair. We suffered through months of school and miserable weather for those **scant** ten weeks of freedom and balmy weather. Any day that I could not spend at the beach or playing ball with my friends seemed like a punishment for something I didn't even do. On those rainy summer days, I had nothing fun to do and could only sit inside, staring out at the rain like an orphan. I was an only child, so there was no one else to play with. My father worked from home, so I was not truly alone, but he could not actively play with me since he was technically at work. It was those days that I would resign myself to whatever was on television or any books that I could find lying around. I'd crawl through the day and pray each night that the rain would not be there the next day.

As an adult, though, my opinion of summer rain has changed. When you have to work every day, summer is not as eagerly **anticipated**. Mostly, the days run together, bleeding into each other so that they no longer seem like separate entities and instead feel like continuations of the same long day. Everything seems **monotonous** and dull, and an ennui or listlessness kicks in. Such a mindset makes you cheer for anything new or different.

I spend the winter dreaming of summer and the summer dreaming of winter. When summer comes, I complain about how hot it is. And then I look forward to the rain, because the rain brings with it a cold front, which offers a **reprieve**—admittedly one that is all too short—from the torture of 100° and humid days. Rainy days are still the worst days of the summer, but summer rain today means positively beautiful—and considerably cooler—weather tomorrow.

**Q1. According to the author, what makes him or her wait for summer?** (1)

---

---

**Q2. Mention one activity that the author liked the most to do during summer.** (1)

---

---

**Q3. According to the passage, why is summer different for adults?** (1)

---

---

**Q4. Which of the following statements is true about the narrator as a child? (1)**

- A. He or she was often bored on summer days.
- B. He or she preferred cooler weather.
- C. He or she liked staying indoors.
- D. He or she had no siblings.

**Q5. In paragraph 4, the author describes why he or she no longer looks forward to summertime the way he or she used to do as a child. What do you think of this change? (1)**

---

---

**Q6. Circle the correct meaning of the given words. (5)**

1. bitter
  - a. unpleasant    b. sweet    c. hostile    d. friendly
2. scant
  - a. tasty    b. limited    c. fun-filled    d. busy
3. anticipated
  - a. long    b. discussed    c. packed    d. expected
4. monotonous
  - a. colorful    b. dull    c. happening    d. exciting
5. reprieve
  - a. break    b. argument    c. compact    d. tiring



**MATHEMATICS**

**Sample Assessment Paper for Admission to Grade IX**

---

Q1. Simplify: ( /3)

a.  $28 + 24 \times 2.5 - 6$

b.  $38.5 + 29.5 \times 14$

c.  $-36 \div (-4) + 36 \times (-1.5)$

Q2. A piece of string is cut into two parts in the ratio 6:5. If the length of the shorter piece is 40cm, find the length of the longer piece. ( /3)

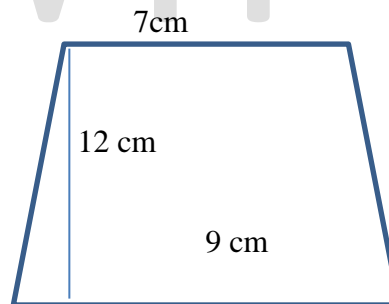
Q3. A cube of mass 12kg has a volume of 343cm<sup>3</sup>. Find:

a. The length of its edge ( /2)

b. Its surface area ( /2)

c. Density ( /1)

Q5 Find the area of the following figure: ( /4)



Q6. A man walks at an average speed of 1.25m/s. Find the time he takes to walk 3.75 m. ( /2)

Q7. Solve simultaneously ( /3)

$$2x+4y = 8$$

$$4x+6y = 14$$

**URDU**

**Sample Assessment Paper for Admission to Grade IX**

جینیئریشنز اسکول

نمونہ پرچہ برائے داخلہ

جماعت نہم

سوال نمبر ۱۔ مندرجہ ذیل عنوان پر ۳۰۰ سے ۳۵۰ الفاظ پر مشتمل مضمون تحریر کریں۔

دردِ دل کے واسطے پیدا کیا انسان کو

SAMPLE

نادیدہ تفضیم

۱۰

سوال نمبر ۲۔ درج ذیل اقتباس بغور پڑھیے اور دیے گئے سوالات کے جوابات تحریر کریں۔

الو کو عام طور پر نحوست اور بے وقوفی کی علامت سمجھا جاتا ہے۔ بہت سے لوگ اسے بے کار سمجھ کر مار ڈالتے ہیں مگر حقیقت یہ ہے کہ خدا کی دنیا میں کوئی چیز بے فائدہ نہیں۔ الو ہماری زراعت اور فصلوں کے لیے بے حد مفید ہے کیونکہ وہ فصل کو نقصان پہنچانے والے کیڑوں کا شکار کر کے انہیں کھا جاتا ہے۔ الو کی غذا نقصان رساں کیڑے اور موذی جانور ہیں۔ اس طرح الو ان انسانوں سے اچھا ہے جو محض اپنی حرص یا اپنے اقتدار کے لیے لوگوں کو ہلاک کر دیتے ہیں۔ الو کی ۱۳۰ قسمیں معلوم ہوئی ہیں۔ یہ عموماً مارات کے وقت بڑے کیڑے، چوہے، چھپکلیاں، سانپ اور چھوٹے خرگوش وغیرہ کا شکار کرتے ہیں۔ دیکھا جائے تو یہ تمام جانور وہ ہیں جو زراعت کو یا انسان کو نقصان پہنچاتی ہیں۔ خدا کی دنیا میں کوئی چیز بے فائدہ نہیں۔ یہاں کوئی چیز حکمت سے خالی نہیں۔ خدا کی دنیا میں الو جیسا پرندہ بھی ایک مفید جز ہے۔ ایسی حالت میں جو انسان دنیا میں اس طرح رہیں کہ انہوں نے دوسروں کے لیے اپنی افادیت کھودی ہے۔ تو وہ بلاشبہ خدا کی نظر میں الو سے بھی زیادہ بے قیمت ہیں ایسے لوگوں کی ضرورت نہ خدا کو ہے نہ عام انسانیت کو۔

سوالات:

۱

۱۔ الو کو کس چیز کی علامت سمجھا جاتا ہے؟

۱

۲۔ الو کس اعتبار سے مفید پرندہ ہے؟

۱

۳۔ مصنف نے الو کو انسانوں سے اچھا کیوں کہا؟

۲

۳۔ الو کی کل کتنی اقسام ہیں اور یہ کن جانوروں کا شکار کرتا ہے؟

۲

۵۔ خدا کے نزدیک کون سے لوگ بے قیمت ہیں؟

.....

.....

۲

۶۔ ”کوئی بھی چیز حکمت سے خالی نہیں“ مصنف کے اس جملے سے آپ کیا سمجھتے ہیں؟

.....

.....

.....

۱

۷۔ کسی ایک لفظ کو جملے میں استعمال کیجیے۔

۱۔ مفید .....

.....

۲۔ بے قیمت .....

.....

**SCIENCE**

**Sample Assessment Paper for Admission to Grade IX**

**PHYSICS**

1. A block of wood has a volume of  $20\text{cm}^3$  and a mass of 180g.  
a) Calculate the density of the block of wood. (Show all steps).

Formula:

Density = \_\_\_\_\_ (2)

- b) The block is held just above the surface of a liquid of density  $0.88\text{g/cm}^3$ .  
Predict and explain what happens (sinks or float) when the block is released.

\_\_\_\_\_  
\_\_\_\_\_  
\_\_\_\_\_ (1)

2. Calculate the resultant force?



Fnet A= \_\_\_\_\_ Fnet B= \_\_\_\_\_ (2)

3. Fig. 3.1 shows a student standing on soft sand. The student does not sink into the sand.



Fig. 4.1



The student has a mass of 40 kg.

- a) Calculate the force of her body acting on the sand.

Force = \_\_\_\_\_ (1)

The total area of both her shoes in contact with the sand is  $0.2 \text{ m}^2$ .

- b) Calculate the pressure the student exerts on the sand, when standing as shown in Fig.4.1.

Pressure = \_\_\_\_\_ (2)

- c) Figure shows an instrument. (2)

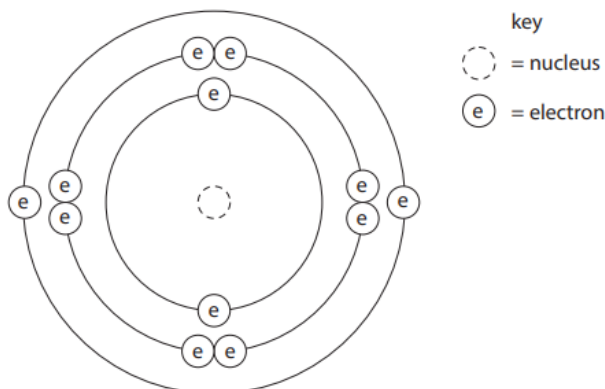
Write down



Name of instrument	
What it measures	
Unit	

**CHEMISTRY**

Q1. The diagram shows the electronic configuration of an atom of element X.



How many protons does the nucleus of this atom contain? \_\_\_\_\_ (1)

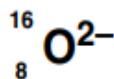
To which group of periodic table does this element belong? Give a reason for your answer. (2)

---



---

Q2. Look at the information about a chlorine atom and an oxide ion.



(a) Complete the table to show the number of protons, neutrons and electrons in each particle.

Two have been done for you.

	Chlorine atom, Cl	Oxide ion, O <sup>2-</sup>
Number of protons	.....	8
Number of neutrons	.....	.....
Number of electrons	17	.....

[3]

(b) Chlorine has the electronic structure 2.8.7.

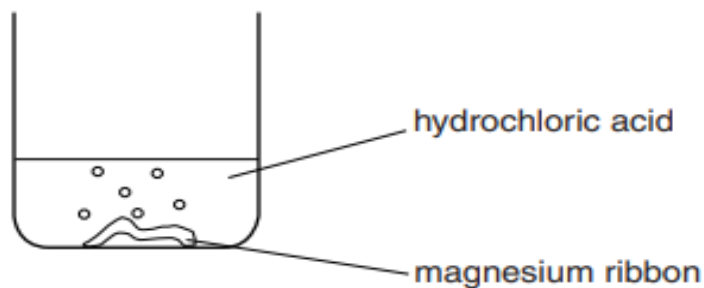
Chlorine, Cl<sub>2</sub>, is a covalent molecule.

Use the 'dot and cross' model to describe the bonding in a molecule of chlorine, Cl<sub>2</sub>.

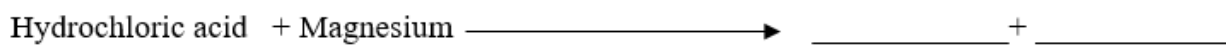
You only need to draw the outer shell electrons.

Rachel investigates the reaction between magnesium and hydrochloric acid.

She adds a piece of magnesium ribbon to hydrochloric acid in a beaker.



Complete the word equation for this reaction. (1)



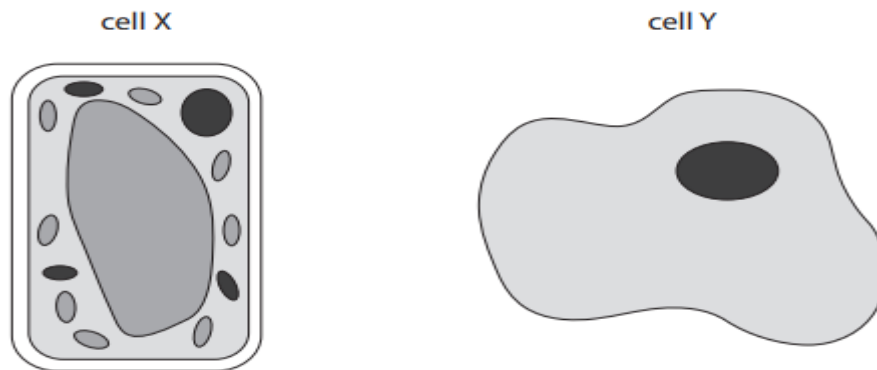
A gas is produced by this reaction. Describe a test for this gas. (1)

---

SAIVIPL

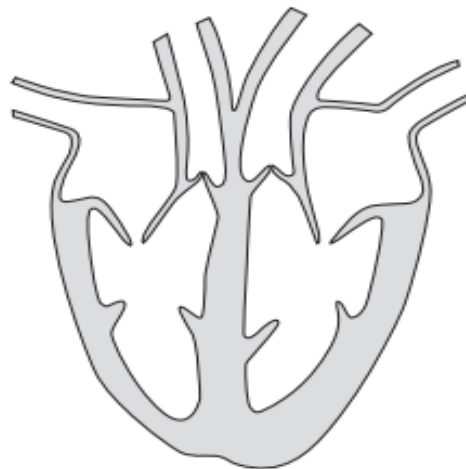
**BIOLOGY**

**Q1. The figure shows two cells.**



- a) Which cell is from a plant? \_\_\_\_\_ (1)
- b) Label three structures, on the diagram, which are present in both the cells. (2)
- c) Label one structure, on the diagram, that are only present in plant cells. (1)

**Q2. Figure shows a heart.**



- a) Shade the region of heart that carries oxygenated blood. (1)
- b) Label the left ventricle. (1)

**Q3. Photograph shows a locust.**



a) Locusts feed on maize plants and locusts are eaten by lizards. Lizards are eaten by snakes. Complete the food chain for these organisms. (1)

\_\_\_\_\_

b) Name the secondary and tertiary consumers in this food chain. (1)

\_\_\_\_\_

c) Maize plant is a producer. Producers make their own food by photosynthesis. State the word equation for photosynthesis. (1)

